

Innovation of Cryo hydration
New Normal Masque

Aqualgin Masque



INTENSIVE CARE

- ✔ NO! Diatomite or starch
- ✔ Breathable masque

The world's first
New normal masque, Aqualgin



Aqualgin Masque BLUE
 700g / 35g X 5ea Cooling
 Glucose, Algin, Allantoin, Dipotassium Glycyrrhizate, Sorbitol, Xylitol



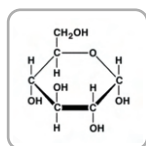
Aqualgin Masque PINK
 700g / 35g X 5ea Hydration
 Glucose, Algin, Hydrolyzed Collagen Panthenol, Betaine, Adenosine

Aqualgin's Main ingredients

Real cooling and real hydration from within

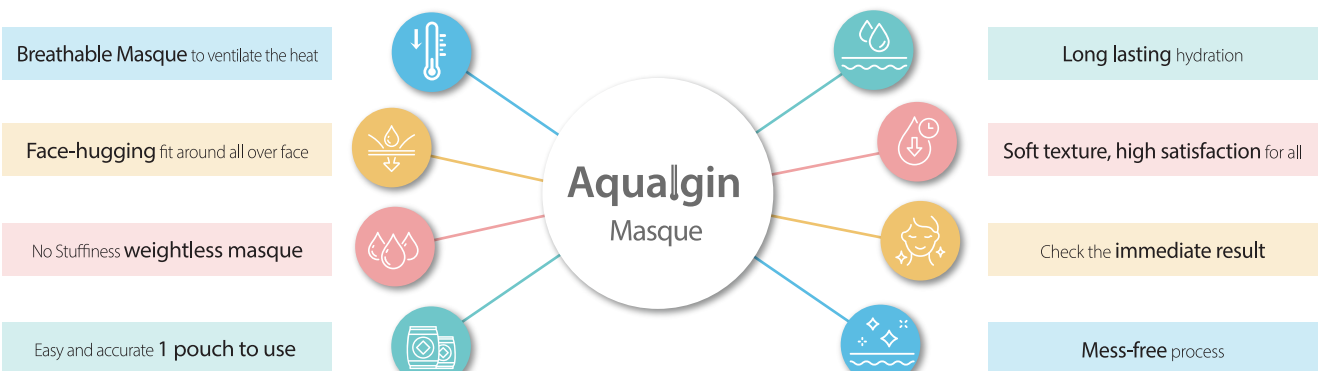


Algin
 Improving skin tone and skin elasticity with rich minerals and vitamins C and E



Glucose
 As a natural moisturizing factor, it has water-binding properties, preventing moisture loss and helping to hydrate the skin.

8 Highlights of Aqualgin



INTENSIVE CARE

Differentiation from other masque products

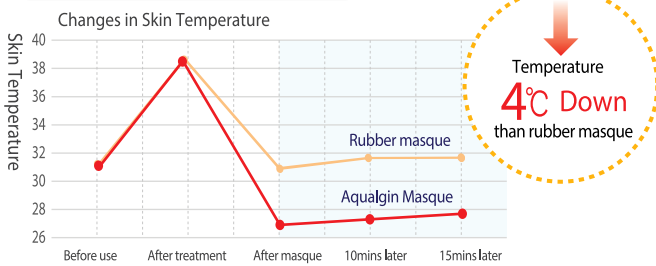
	Modeling Masque
Beneficial Ingredients	Not much
Cooling	Temporary
Hydration	Not continuous
Main Ingredients	Diatomite, Starch
Residue	Untidy with a lot of hardened residue and powder left on the skin

Aqualgin Masque

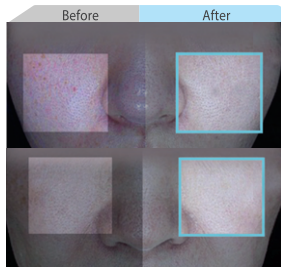
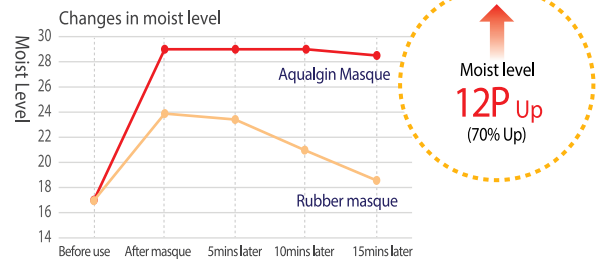
- Hydration agent and soothing agent (Glucose, Algin, Alantoin and etc)
- Breathable, keep cooling down
- Long lasting hydration
- Algin with plenty of mineral
- Remove the masque in one piece easily
The bouncy texture doesn't leave any residue

For 15minutes, real cooling and hydration

Long lasting Cryo-cooling effect



Long lasting Hydration effect



70%
11.4°C
Deep Hydration
11.4°C Down after applying masque

From face to the body all purpose masque Aqualgin

- After laser treatment
- After peeling
- Sunburn care
- Sensitive skin
- Dehydrated skin
- After plastic surgery
- After outdoor activities

How to use



Step . 1

Mix 1 pouch of Aqualgin (35g) with water (50g) for 50sec

Step . 2

Apply on a face evenly

Step . 3

15 mins later, remove the masque by rolling it from the forehead to the chin

Tip. How to mix better : add half a cup of water and stir for 15 seconds, then add the rest of the water to mix all